

## **Wilkinson Rd between Carey Rd and Mann Ave**

**November 22, 2020 To November 27, 2020**



The data presented here is for information purposes only and should not be considered authoritative for construction, geotechnical, engineering, navigational, legal, or other site-specific uses. The information shared is owned by the Transportation Division of the Engineering Department at the District of Saanich. Accuracy is not guaranteed.

Start Date: 23-Nov-20  
 Start Time: 23:00  
 Station ID: M0041-04

**Location 1: Wilkinson Rd between Carey Rd and Mann Ave**

Note:

DATE:	November 23, 2020		November 24, 2020		November 25, 2020		November 26, 2020		November 27, 2020		WK AVG		WK AVG	HOURLY
	MON		TUE		WED		THURS		FRI				CH 1+2	%
Time:	NB	SB	NB	SB	NB	SB	NB	SB	NB	SB	NB	SB		
12-1 AM	14	20	15	22	17	25	20	37			17	26	43	0.3%
1-2 AM	9	12	6	11	11	6	10	10			9	10	19	0.1%
2-3 AM	13	5	16	13	15	8	17	10			15	9	24	0.2%
3-4 AM	19	5	18	3	19	12	18	5			19	6	25	0.2%
4-5 AM	35	18	34	19	40	18	35	16			36	18	54	0.4%
5-6 AM	118	40	131	40	124	47	140	52			128	45	173	1.3%
6-7 AM	357	151	376	170	367	178	364	182			366	170	536	4.0%
7-8 AM	537	342	588	358	568	353	568	325			565	345	910	6.8%
8-9 AM	578	438	661	465	630	479	661	506			633	472	1105	8.2%
9-10 AM	450	388	444	407	463	413	545	393			476	400	876	6.5%
10-11 AM	446	401	422	381	442	379	464	425			444	397	840	6.3%
11-12 PM	480	469	450	415	498	463	468	458			474	451	925	6.9%
12-1 PM	472	448	498	487	520	484	487	488			494	477	971	7.2%
1-2 PM	487	437	472	502	514	487	534	518			502	486	988	7.4%
2-3 PM	504	440	566	486	568	491	564	495			551	478	1029	7.7%
3-4 PM	607	557	554	507	549	538	621	552			583	539	1121	8.4%
4-5 PM	533	538	468	513	534	575	507	540			511	542	1052	7.8%
5-6 PM	386	462	370	467	400	448	435	479			398	464	862	6.4%
6-7 PM	303	302	293	279	307	325	301	309			301	304	605	4.5%
7-8 PM	230	241	223	261	220	206	252	243			231	238	469	3.5%
8-9 PM	174	149	174	146	172	145	194	189			179	157	336	2.5%
9-10 PM	93	109	104	99	111	114	97	109			101	108	209	1.6%
10-11 PM	71	69	60	65	70	55	84	87			71	69	140	1.0%
11-12 AM	32	55	43	54	42	61	43	54			40	56	96	0.7%
<b>LANES</b>	<b>6948</b>	<b>6096</b>	<b>6986</b>	<b>6170</b>	<b>7201</b>	<b>6310</b>	<b>7429</b>	<b>6482</b>			<b>7141</b>	<b>6265</b>	<b>13406</b>	<b>100.0%</b>
<b>TOTAL</b>	<b>13044</b>		<b>13156</b>		<b>13511</b>		<b>13911</b>				<b>13410</b>			
	MON		TUE		WED		THURS		FRI		WK AVG			

PEAK HOUR					TOTAL VEHICALS-PEAK PERIODS		2 HOUR PEAK INTERVALS					
MAX. 7 - 9 am PEAK HOUR	1105	⇒	8.2%	between	8-9 AM	5824	⇒	6 HR TOTAL	<b>2 HR AM (7 - 9 AM)</b>			
MAX. 7 - 11 am PEAK HOUR	1105	⇒	8.2%	between	8-9 AM	3928	⇒	4 HR TOTAL	VEH / HR	VEH / 2HR	2 HR %	
									7-8 AM	910	2014	15.0%
									8-9 AM	1105		
MAX. 11 am - 1 pm PEAK HOUR	971	⇒	7.2%	between	12-1 PM	<b>2 HR NOON (11 - 1 PM)</b>						
MAX. 11 am - 3 pm PEAK HOUR	1029	⇒	7.7%	between	2-3 PM	<b>24 HOUR FACTORS</b>						
MAX. 4 - 6 pm PEAK HOUR	1052	⇒	7.8%	between	4-5 PM	2.30	⇒	6-24 HR FACT.	VEH / HR	VEH / 2HR	2 HR %	
MAX. 3 - 6 pm PEAK HOUR	1121	⇒	8.4%	between	3-4 PM	3.41	⇒	4-24 HR FACT.	11-12 PM	925	1896	14.1%
									12-1 PM	971		
									<b>2 HR PM (4 - 6 PM)</b>			
									VEH / HR	VEH / 2HR	2 HR %	
									4-5 PM	1052	1914	14.3%
									5-6 PM	862		

# Wilkinson Rd between Carey Rd and Mann Ave

Northbound

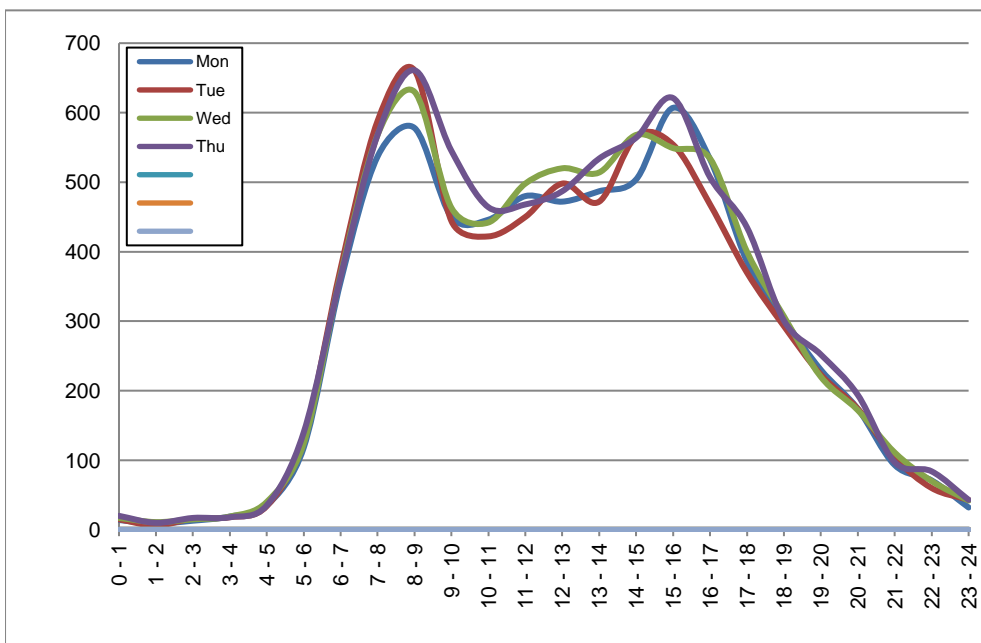
November 23, 2020 to November 26, 2020

## Hourly Volumes

Time Period	Mon	Tue	Wed	Thu			
	Nov 23	Nov 24	Nov 25	Nov 26			
0 - 1	14	15	17	20			
1 - 2	9	6	11	10			
2 - 3	13	16	15	17			
3 - 4	19	18	19	18			
4 - 5	35	34	40	35			
5 - 6	118	131	124	140			
6 - 7	357	376	367	364			
7 - 8	537	588	568	568			
8 - 9	578	661	630	661			
9 - 10	450	444	463	545			
10 - 11	446	422	442	464			
11 - 12	480	450	498	468			
12 - 13	472	498	520	487			
13 - 14	487	472	514	534			
14 - 15	504	566	568	564			
15 - 16	607	554	549	621			
16 - 17	533	468	534	507			
17 - 18	386	370	400	435			
18 - 19	303	293	307	301			
19 - 20	230	223	220	252			
20 - 21	174	174	172	194			
21 - 22	93	104	111	97			
22 - 23	71	60	70	84			
23 - 24	32	43	42	43			
<b>Day Total</b>	<b>6948</b>	<b>6986</b>	<b>7201</b>	<b>7429</b>			

## 15-Minute Volumes

Time Start	Mon	Tue	Wed	Thu				Time Start	Mon	Tue	Wed	Thu			
	Nov 23	Nov 24	Nov 25	Nov 26					Nov 23	Nov 24	Nov 25	Nov 26			
0:00	3	8	8	10				12:00	143	129	121	111			
0:15	4	3	3	3				12:15	109	125	145	119			
0:30	4	2	4	2				12:30	113	126	125	120			
0:45	3	2	2	5				12:45	107	118	129	137			
1:00	4	1	2	2				13:00	114	117	145	147			
1:15	1	3	2	3				13:15	111	114	115	134			
1:30	2	1	3	1				13:30	132	126	123	127			
1:45	2	1	4	4				13:45	130	115	131	126			
2:00	3	2	2	3				14:00	129	149	133	130			
2:15	3	4	2	6				14:15	114	121	132	128			
2:30	2	5	6	2				14:30	127	158	140	132			
2:45	5	5	5	6				14:45	134	138	163	174			
3:00	4	4	6	2				15:00	179	152	156	170			
3:15	4	3	2	4				15:15	161	156	127	165			
3:30	3	1	5	8				15:30	136	124	139	148			
3:45	8	10	6	4				15:45	131	122	127	138			
4:00	11	3	8	6				16:00	147	120	149	137			
4:15	9	8	11	15				16:15	133	130	132	118			
4:30	7	11	10	5				16:30	122	110	141	123			
4:45	8	12	11	9				16:45	131	108	112	129			
5:00	15	17	17	17				17:00	105	114	138	117			
5:15	18	23	15	24				17:15	115	89	94	115			
5:30	42	35	43	43				17:30	87	88	96	98			
5:45	43	56	49	56				17:45	79	79	72	105			
6:00	58	59	59	52				18:00	88	85	93	83			
6:15	76	86	78	79				18:15	77	62	78	77			
6:30	121	115	114	118				18:30	77	65	86	72			
6:45	102	116	116	115				18:45	61	81	50	69			
7:00	99	97	95	107				19:00	66	60	45	52			
7:15	123	140	141	124				19:15	64	59	58	82			
7:30	151	166	175	170				19:30	54	63	60	53			
7:45	164	185	157	167				19:45	46	41	57	65			
8:00	132	150	165	160				20:00	51	48	53	58			
8:15	156	151	166	157				20:15	43	47	50	53			
8:30	140	174	151	183				20:30	38	45	39	48			
8:45	150	186	148	161				20:45	42	34	30	35			
9:00	119	109	117	165				21:00	27	33	26	23			
9:15	112	96	107	110				21:15	23	26	39	22			
9:30	109	131	106	161				21:30	30	26	24	27			
9:45	110	108	133	109				21:45	13	19	22	25			
10:00	101	100	91	97				22:00	24	15	21	17			
10:15	86	107	104	114				22:15	21	17	24	26			
10:30	113	110	121	129				22:30	17	10	14	25			
10:45	146	105	126	124				22:45	9	18	11	16			
11:00	111	92	128	116				23:00	13	16	18	16			
11:15	125	122	119	116				23:15	5	11	8	10			
11:30	122	122	139	113				23:30	12	6	3	6			
11:45	122	114	112	123				23:45	2	10	13	11			



Site notes:

# Wilkinson Rd between Carey Rd and Mann Ave

Southbound

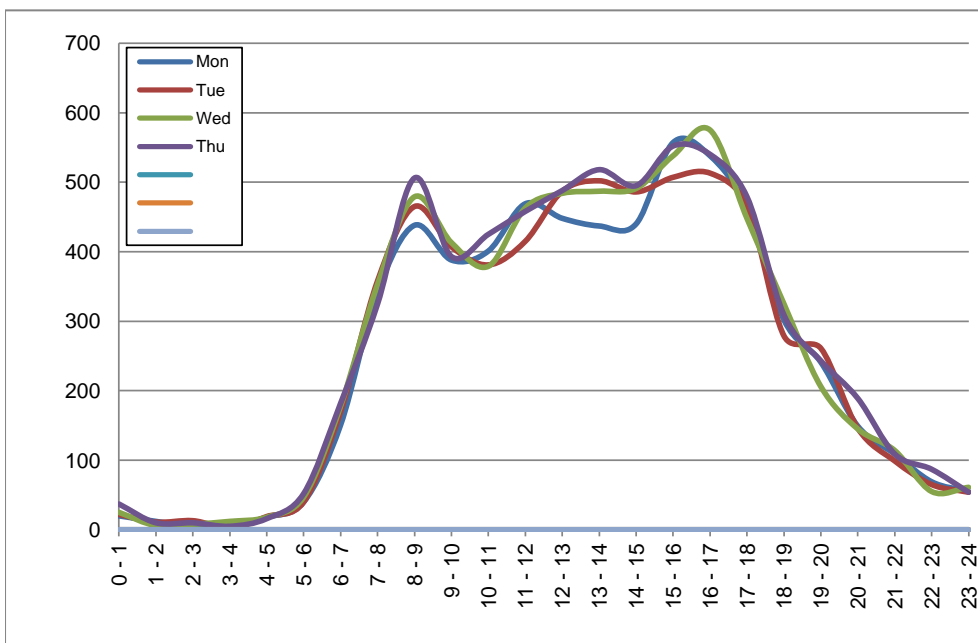
November 23, 2020 to November 26, 2020

## Hourly Volumes

Time Period	Mon	Tue	Wed	Thu			
	Nov 23	Nov 24	Nov 25	Nov 26			
0 - 1	20	22	25	37			
1 - 2	12	11	6	10			
2 - 3	5	13	8	10			
3 - 4	5	3	12	5			
4 - 5	18	19	18	16			
5 - 6	40	40	47	52			
6 - 7	151	170	178	182			
7 - 8	342	358	353	325			
8 - 9	438	465	479	506			
9 - 10	388	407	413	393			
10 - 11	401	381	379	425			
11 - 12	469	415	463	458			
12 - 13	448	487	484	488			
13 - 14	437	502	487	518			
14 - 15	440	486	491	495			
15 - 16	557	507	538	552			
16 - 17	538	513	575	540			
17 - 18	462	467	448	479			
18 - 19	302	279	325	309			
19 - 20	241	261	206	243			
20 - 21	149	146	145	189			
21 - 22	109	99	114	109			
22 - 23	69	65	55	87			
23 - 24	55	54	61	54			
<b>Day Total</b>	<b>6096</b>	<b>6170</b>	<b>6310</b>	<b>6482</b>			

## 15-Minute Volumes

Time Start	Mon	Tue	Wed	Thu				Time Start	Mon	Tue	Wed	Thu			
	Nov 23	Nov 24	Nov 25	Nov 26					Nov 23	Nov 24	Nov 25	Nov 26			
0:00	7	8	11	15				12:00	118	115	124	123			
0:15	4	7	11	9				12:15	107	134	126	123			
0:30	6	4	3	8				12:30	110	122	129	132			
0:45	3	3	0	5				12:45	113	116	105	110			
1:00	2	5	3	5				13:00	122	123	114	142			
1:15	1	3	1	1				13:15	112	140	136	114			
1:30	5	1	1	1				13:30	105	129	107	142			
1:45	4	2	1	3				13:45	98	110	130	120			
2:00	0	5	1	5				14:00	102	114	117	110			
2:15	2	4	4	3				14:15	113	137	132	128			
2:30	3	3	0	0				14:30	121	117	116	123			
2:45	0	1	3	2				14:45	104	118	126	134			
3:00	1	0	3	1				15:00	124	123	152	131			
3:15	1	0	5	1				15:15	163	141	132	134			
3:30	1	2	0	1				15:30	132	132	134	151			
3:45	2	1	4	2				15:45	138	111	120	136			
4:00	4	2	3	2				16:00	137	140	162	129			
4:15	1	7	5	6				16:15	126	121	127	138			
4:30	5	3	5	4				16:30	140	126	123	137			
4:45	8	7	5	4				16:45	135	126	163	136			
5:00	4	5	4	7				17:00	141	139	126	135			
5:15	8	7	7	14				17:15	105	120	129	133			
5:30	6	13	13	12				17:30	122	104	102	108			
5:45	22	15	23	19				17:45	94	104	91	103			
6:00	33	28	28	34				18:00	91	69	96	83			
6:15	22	34	34	40				18:15	71	68	71	90			
6:30	42	39	52	51				18:30	83	67	86	68			
6:45	54	69	64	57				18:45	57	75	72	68			
7:00	88	64	80	79				19:00	76	81	67	86			
7:15	73	77	73	61				19:15	58	74	62	50			
7:30	81	96	98	79				19:30	61	56	46	47			
7:45	100	121	102	106				19:45	46	50	31	60			
8:00	100	94	95	119				20:00	44	40	43	60			
8:15	119	142	119	125				20:15	30	38	41	52			
8:30	115	122	125	128				20:30	38	37	32	41			
8:45	104	107	140	134				20:45	37	31	29	36			
9:00	107	122	115	99				21:00	35	32	40	44			
9:15	86	110	113	94				21:15	19	25	27	17			
9:30	88	86	74	98				21:30	33	25	27	27			
9:45	107	89	111	102				21:45	22	17	20	21			
10:00	101	94	95	103				22:00	25	20	21	28			
10:15	105	96	82	91				22:15	19	14	10	26			
10:30	101	97	100	130				22:30	13	18	13	15			
10:45	94	94	102	101				22:45	12	13	11	18			
11:00	103	104	107	133				23:00	27	23	28	17			
11:15	121	83	116	86				23:15	12	16	17	20			
11:30	132	100	115	109				23:30	10	7	8	11			
11:45	113	128	125	130				23:45	6	8	8	6			



Site notes:

# Vehicle Speed Summary

Saanich Engineering Department

Count Id: **M0041-04**

Filename: [Wilkinson Rd between Carey Rd and Mann Ave-Nov-2020.xlsm](#)

**Location:** Wilkinson Rd between Carey Rd and Mann Ave

Note:

Direction: **North-South**

Dates: **November 22, 2020 To November 27, 2020**

*Filtered data*

AVG. SPEED	<b>33</b> mph	<b>53</b> km/h
50 % SPEED	<b>33</b> mph	<b>53</b> km/h
85 % SPEED	<b>37</b> mph	<b>59</b> km/h
95 % SPEED	<b>39</b> mph	<b>63</b> km/h

Location Map



**Wilkinson Rd between Carey Rd and Mann Ave**

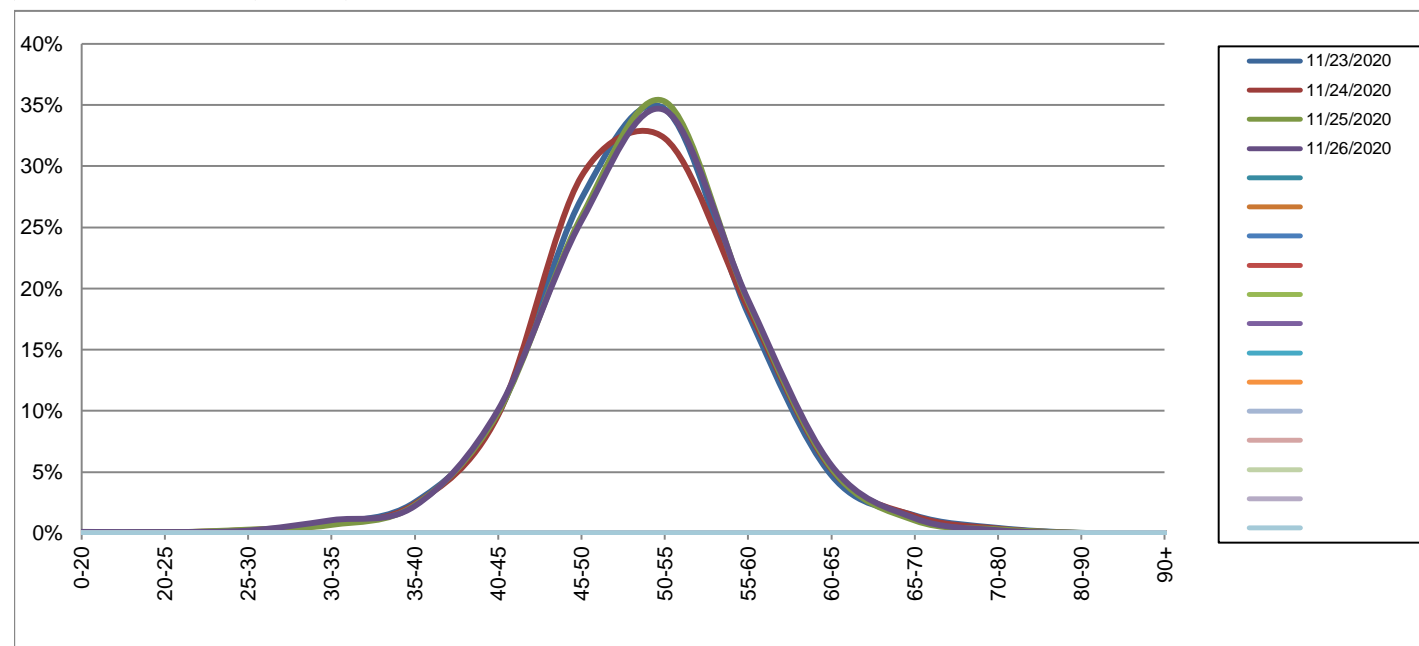
Northbound

November 23, 2020 to November 26, 2020

Daily Speed Bin Percentages														Daily Speed Bin Volumes														Total	Avg.	
Bin #	1	2	3	4	5	6	7	8	9	10	11	12	13	14	1	2	3	4	5	6	7	8	9	10	11	12	13	14	Volume	Speed
Bin Speeds	0-20	20-25	25-30	30-35	35-40	40-45	45-50	50-55	55-60	60-65	65-70	70-80	80-90	90+	0-20	20-25	25-30	30-35	35-40	40-45	45-50	50-55	55-60	60-65	65-70	70-80	80-90	90+		
11/23/2020	0.0%	0.1%	0.2%	0.8%	2.5%	9.7%	27.3%	34.7%	17.9%	4.7%	1.5%	0.4%	0.0%	0.0%	3	6	11	57	176	677	1900	2410	1246	329	101	30	2	0	6948	51
11/24/2020	0.0%	0.1%	0.3%	0.7%	2.4%	9.6%	29.2%	32.3%	18.4%	5.2%	1.4%	0.4%	0.0%	0.0%	3	4	18	52	167	674	2038	2255	1285	365	98	26	1	0	6986	51
11/25/2020	0.0%	0.1%	0.3%	0.7%	2.3%	9.9%	25.9%	35.3%	18.9%	5.3%	1.0%	0.3%	0.0%	0.0%	3	4	21	49	165	710	1864	2541	1362	382	75	23	2	0	7201	51
11/26/2020	0.1%	0.1%	0.2%	1.1%	2.2%	10.1%	25.5%	34.6%	19.1%	5.5%	1.2%	0.2%	0.0%	0.0%	8	7	16	79	165	749	1897	2569	1417	412	91	18	1	0	7429	51
<b>Total</b>	0.1%	0.1%	0.2%	0.8%	2.4%	9.8%	27.0%	34.2%	18.6%	5.2%	1.3%	0.3%	0.0%	0.0%	17	21	66	237	673	2810	7699	9775	5310	1488	365	97	6	0	28564	51

**Speed Data Summary**

Bin #	1	2	3	4	5	6	7	8	9	10	11	12	13	14	Total
Bin Speeds	0-20	20-25	25-30	30-35	35-40	40-45	45-50	50-55	55-60	60-65	65-70	70-80	80-90	90+	
Survey Total	17	21	66	237	673	2810	7699	9775	5310	1488	365	97	6	0	28564
% Total	0.1%	0.1%	0.2%	0.8%	2.4%	9.8%	27.0%	34.2%	18.6%	5.2%	1.3%	0.3%	0.0%	0.0%	100%
Accumulated %	0.1%	0.1%	0.4%	1.2%	3.5%	13.4%	40.3%	74.6%	93.2%	98.4%	99.6%	100.0%	100.0%	100%	
Inverse Accum. %	99.9%	99.9%	99.6%	98.8%	96.5%	86.6%	59.7%	25.4%	6.8%	1.6%	0.4%	0.0%	0.0%	0.0%	
Average Speed	51 KM/H														



Site notes:

**Wilkinson Rd between Carey Rd and Mann Ave**

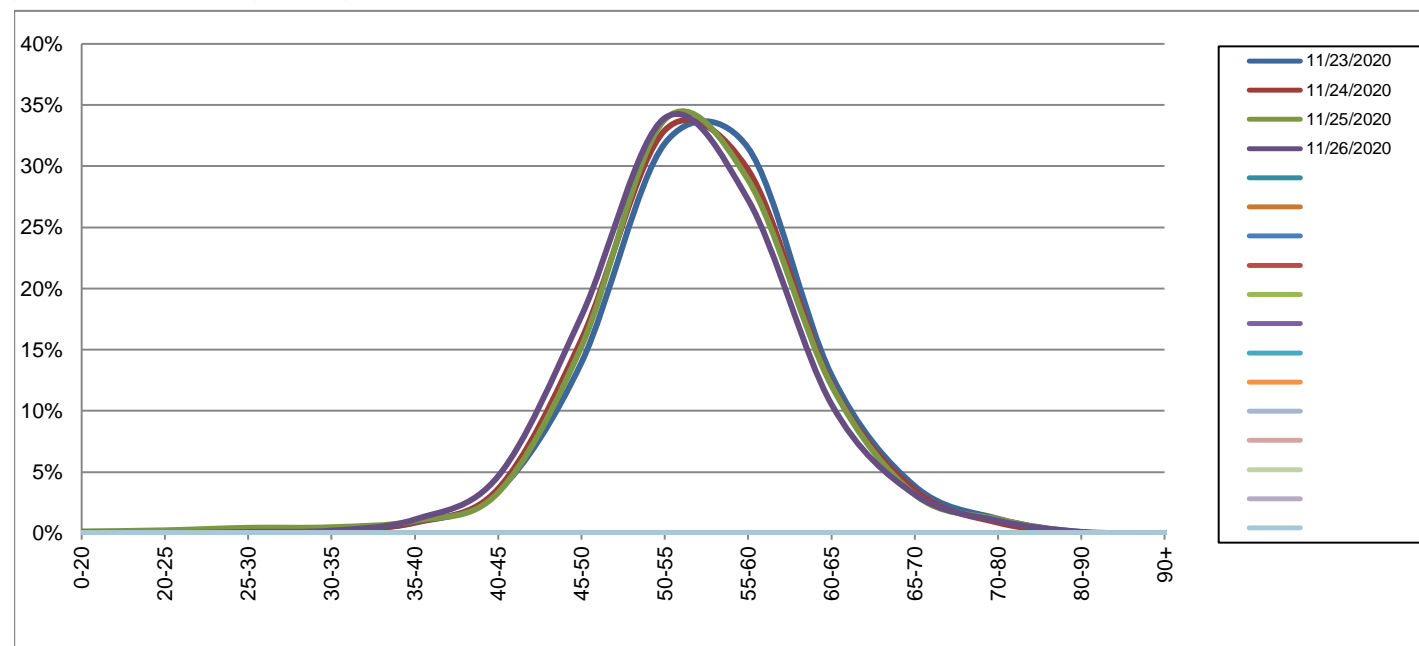
Southbound

November 23, 2020 to November 26, 2020

Daily Speed Bin Percentages														Daily Speed Bin Volumes														Total	Avg.	
Bin #	1	2	3	4	5	6	7	8	9	10	11	12	13	14	1	2	3	4	5	6	7	8	9	10	11	12	13	14	Volume	Speed
Bin Speeds	0-20	20-25	25-30	30-35	35-40	40-45	45-50	50-55	55-60	60-65	65-70	70-80	80-90	90+	0-20	20-25	25-30	30-35	35-40	40-45	45-50	50-55	55-60	60-65	65-70	70-80	80-90	90+		
11/23/2020	0.0%	0.0%	0.1%	0.2%	0.9%	3.4%	13.9%	31.9%	31.5%	12.9%	3.9%	1.2%	0.1%	0.0%	2	0	5	15	52	208	850	1942	1920	789	235	72	6	0	6096	55
11/24/2020	0.0%	0.0%	0.0%	0.3%	0.9%	3.6%	15.8%	32.9%	29.7%	12.2%	3.5%	0.9%	0.0%	0.0%	0	1	3	16	55	224	977	2032	1833	755	217	53	3	1	6170	55
11/25/2020	0.1%	0.2%	0.4%	0.5%	1.0%	3.3%	15.2%	33.8%	28.9%	12.1%	3.2%	1.1%	0.0%	0.0%	9	15	28	31	64	209	962	2133	1823	762	200	72	1	1	6310	54
11/26/2020	0.1%	0.0%	0.1%	0.2%	1.1%	4.7%	17.8%	33.9%	27.3%	10.6%	3.2%	1.0%	0.1%	0.0%	4	1	7	14	73	302	1151	2200	1767	684	205	66	7	1	6482	54
<b>Total</b>	0.1%	0.1%	0.2%	0.3%	1.0%	3.8%	15.7%	33.2%	29.3%	11.9%	3.4%	1.0%	0.1%	0.0%	15	17	43	76	244	943	3940	8307	7343	2990	857	263	17	3	25058	54

**Speed Data Summary**

Bin #	1	2	3	4	5	6	7	8	9	10	11	12	13	14	Total
Bin Speeds	0-20	20-25	25-30	30-35	35-40	40-45	45-50	50-55	55-60	60-65	65-70	70-80	80-90	90+	
<b>Survey Total</b>	15	17	43	76	244	943	3940	8307	7343	2990	857	263	17	3	25058
<b>% Total</b>	0.1%	0.1%	0.2%	0.3%	1.0%	3.8%	15.7%	33.2%	29.3%	11.9%	3.4%	1.0%	0.1%	0.0%	100%
<b>Accumulated %</b>	0.1%	0.1%	0.3%	0.6%	1.6%	5.3%	21.1%	54.2%	83.5%	95.5%	98.9%	99.9%	100.0%	100%	
<b>Inverse Accum. %</b>	99.9%	99.9%	99.7%	99.4%	98.4%	94.7%	78.9%	45.8%	16.5%	4.5%	1.1%	0.1%	0.0%	0.0%	
<b>Average Speed</b>	54 KM/H														



Site notes:



**Wilkinson Rd between Carey Rd and Mann Ave**

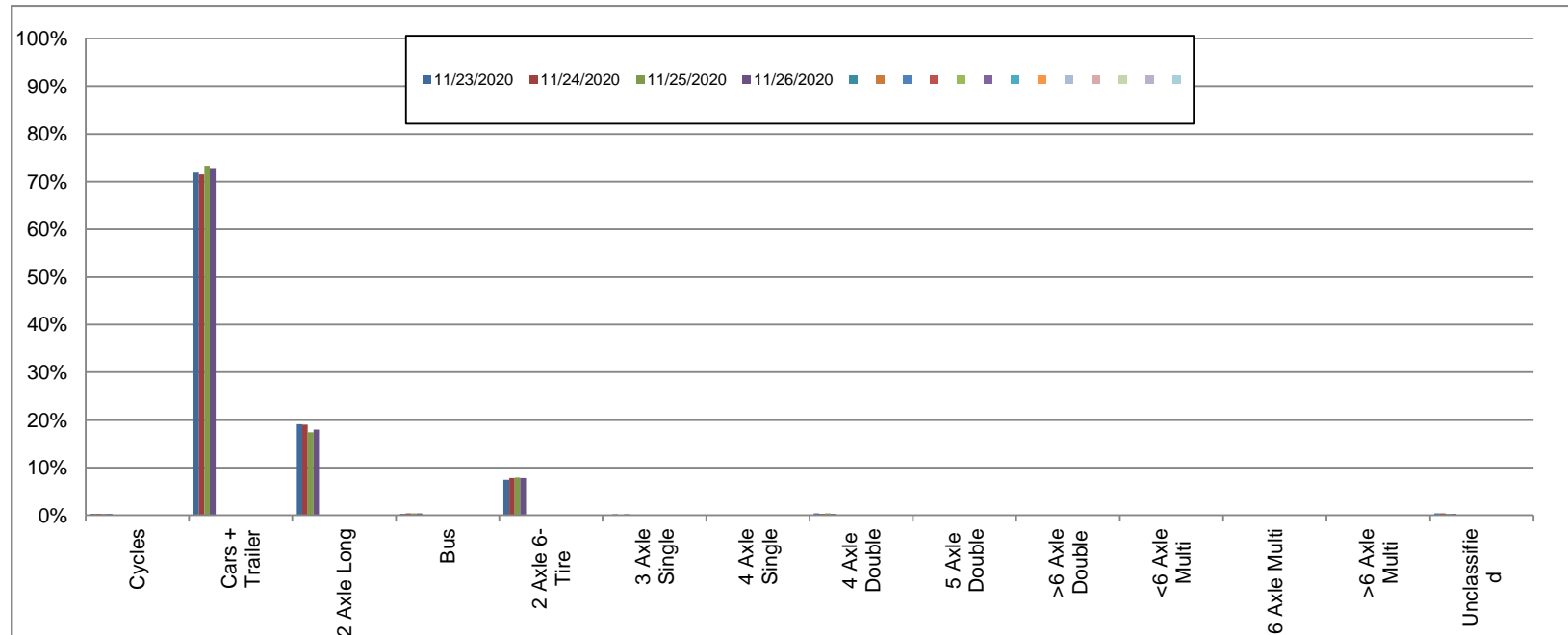
Northbound

November 23, 2020 to November 26, 2020

Daily Class Bin Percentages															Daily Class Bin Volumes														
Bin #	1	2	3	4	5	6	7	8	9	10	11	12	13	14	1	2	3	4	5	6	7	8	9	10	11	12	13	14	Total Volume
Bin Class	Cycles	Cars + Trailer	2 Axle Long	Bus	2 Axle 6-Tire	3 Axle Single	4 Axle Single	4 Axle Double	5 Axle Double	>6 Axle Double	<6 Axle Multi	6 Axle Multi	>6 Axle Multi	Unclassified	Cycles	Cars + Trailer	2 Axle Long	Bus	2 Axle 6-Tire	3 Axle Single	4 Axle Single	4 Axle Double	5 Axle Double	>6 Axle Double	<6 Axle Multi	6 Axle Multi	>6 Axle Multi	Unclassified	
11/23/2020	0.3%	71.9%	19.1%	0.3%	7.5%	0.1%	0.0%	0.4%	0.0%	0.0%	0.0%	0.0%	0.0%	0.4%	18	4995	1325	23	519	9	1	28	1	1	0	0	0	28	6948
11/24/2020	0.3%	71.6%	19.0%	0.4%	7.8%	0.2%	0.0%	0.3%	0.0%	0.0%	0.0%	0.0%	0.0%	0.4%	20	4999	1327	25	546	15	1	21	2	1	0	0	0	29	6986
11/25/2020	0.3%	73.2%	17.4%	0.4%	7.9%	0.1%	0.0%	0.4%	0.0%	0.0%	0.0%	0.0%	0.0%	0.3%	22	5269	1254	26	568	10	0	28	2	1	0	0	0	21	7201
11/26/2020	0.3%	72.6%	18.0%	0.4%	7.8%	0.2%	0.0%	0.3%	0.0%	0.0%	0.0%	0.0%	0.0%	0.3%	19	5395	1338	30	582	13	1	24	3	1	0	0	0	23	7429
<b>Total</b>	0.3%	72.3%	18.4%	0.4%	7.8%	0.2%	0.0%	0.4%	0.0%	0.0%	0.0%	0.0%	0.0%	0.4%	79	20658	5244	104	2215	47	3	101	8	4	0	0	0	101	28564

**Class Data Summary**

Bin #	1	2	3	4	5	6	7	8	9	10	11	12	13	14	Total Volume
Bin Class	Cycles	Cars + Trailer	2 Axle Long	Bus	2 Axle 6-Tire	3 Axle Single	4 Axle Single	4 Axle Double	5 Axle Double	>6 Axle Double	<6 Axle Multi	6 Axle Multi	>6 Axle Multi	Unclassified	Total Volume
<b>Survey Total</b>	79	20658	5244	104	2215	47	3	101	8	4	0	0	0	101	28564
<b>% Total</b>	0.3%	72.3%	18.4%	0.4%	7.8%	0.2%	0.0%	0.4%	0.0%	0.0%	0.0%	0.0%	0.0%	0.4%	100%
<b>Accumulated %</b>	0.3%	72.6%	91.0%	91.3%	99.1%	99.2%	99.3%	99.6%	99.6%	99.6%	99.6%	99.6%	99.6%	100.0%	
<b>Inv. Accum. %</b>	99.7%	27.4%	9.0%	8.7%	0.9%	0.8%	0.7%	0.4%	0.4%	0.4%	0.4%	0.4%	0.4%	0.0%	



**Classification Descriptions**

Bin #	Bin Description
1	Motorcycles
2	Passenger cars, including those with recreational trailers
3	2-axle pick-ups, vans, and RVs, including those with recreational trailers
4	Buses
5	2-axle, 6-tire single units
6	3-axle single units
7	4-axle single units
8	3-axle or 4-axle double unit
9	5-axle double unit
10	6-, 7-, or 8-axle double unit
11	5-axle multiple unit
12	6-axle multiple unit
13	7-or-more-axle multiple unit
14	Vehicles that could not be classified

Site notes:



**Wilkinson Rd between Carey Rd and Mann Ave**

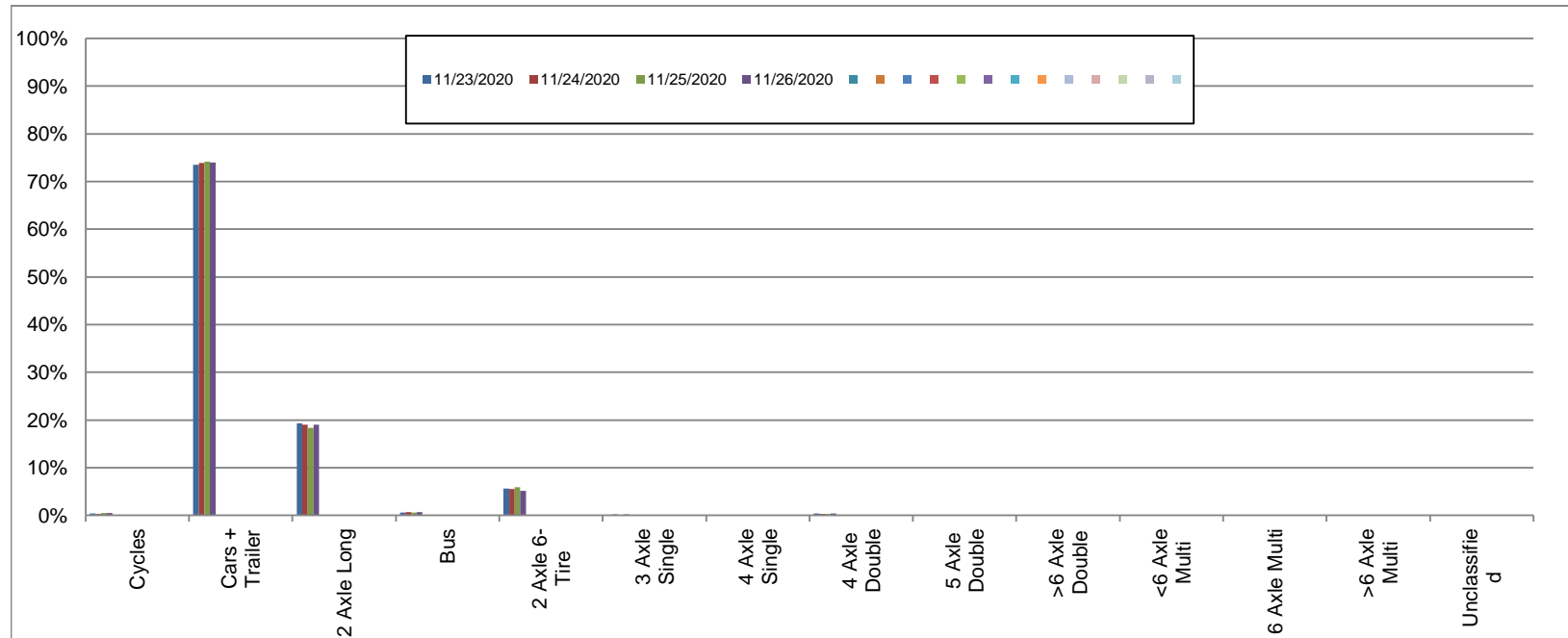
Southbound

November 23, 2020 to November 26, 2020

Daily Class Bin Percentages															Daily Class Bin Volumes														
Bin #	1	2	3	4	5	6	7	8	9	10	11	12	13	14	1	2	3	4	5	6	7	8	9	10	11	12	13	14	Total Volume
Bin Class	Cycles	Cars + Trailer	2 Axle Long	Bus	2 Axle 6-Tire	3 Axle Single	4 Axle Single	4 Axle Double	5 Axle Double	>6 Axle Double	<6 Axle Multi	6 Axle Multi	>6 Axle Multi	Unclassified	Cycles	Cars + Trailer	2 Axle Long	Bus	2 Axle 6-Tire	3 Axle Single	4 Axle Single	4 Axle Double	5 Axle Double	>6 Axle Double	<6 Axle Multi	6 Axle Multi	>6 Axle Multi	Unclassified	
11/23/2020	0.4%	73.5%	19.3%	0.6%	5.6%	0.1%	0.0%	0.4%	0.0%	0.0%	0.0%	0.0%	0.0%	0.1%	24	4479	1175	38	342	6	1	24	2	0	0	0	0	5	6096
11/24/2020	0.3%	73.9%	19.0%	0.6%	5.5%	0.2%	0.0%	0.3%	0.0%	0.0%	0.0%	0.0%	0.0%	0.1%	19	4557	1171	40	342	12	1	20	1	0	0	0	0	7	6170
11/25/2020	0.4%	74.2%	18.3%	0.6%	5.9%	0.1%	0.0%	0.3%	0.0%	0.0%	0.0%	0.0%	0.0%	0.1%	28	4680	1156	39	373	8	0	21	1	0	0	0	0	4	6310
11/26/2020	0.4%	74.0%	19.0%	0.6%	5.2%	0.2%	0.0%	0.4%	0.0%	0.0%	0.0%	0.0%	0.0%	0.1%	29	4794	1231	42	335	13	2	25	2	1	0	0	1	7	6482
<b>Total</b>	0.4%	73.9%	18.9%	0.6%	5.6%	0.2%	0.0%	0.4%	0.0%	0.0%	0.0%	0.0%	0.0%	0.1%	100	18510	4733	159	1392	39	4	90	6	1	0	0	1	23	25058

**Class Data Summary**

Bin #	1	2	3	4	5	6	7	8	9	10	11	12	13	14	Total Volume
Bin Class	Cycles	Cars + Trailer	2 Axle Long	Bus	2 Axle 6-Tire	3 Axle Single	4 Axle Single	4 Axle Double	5 Axle Double	>6 Axle Double	<6 Axle Multi	6 Axle Multi	>6 Axle Multi	Unclassified	Total Volume
<b>Survey Total</b>	100	18510	4733	159	1392	39	4	90	6	1	0	0	1	23	25058
<b>% Total</b>	0.4%	73.9%	18.9%	0.6%	5.6%	0.2%	0.0%	0.4%	0.0%	0.0%	0.0%	0.0%	0.0%	0.1%	100%
<b>Accumulated %</b>	0.4%	74.3%	93.2%	93.8%	99.3%	99.5%	99.5%	99.9%	99.9%	99.9%	99.9%	99.9%	100.0%		
<b>Inv. Accum. %</b>	99.6%	25.7%	6.8%	6.2%	0.7%	0.5%	0.5%	0.1%	0.1%	0.1%	0.1%	0.1%	0.0%		



**Classification Descriptions**

Bin #	Bin Description
1	Motorcycles
2	Passenger cars, including those with recreational trailers
3	2-axle pick-ups, vans, and RVs, including those with recreational trailers
4	Buses
5	2-axle, 6-tire single units
6	3-axle single units
7	4-axle single units
8	3-axle or 4-axle double unit
9	5-axle double unit
10	6-, 7-, or 8-axle double unit
11	5-axle multiple unit
12	6-axle multiple unit
13	7-or-more-axle multiple unit
14	Vehicles that could not be classified

Site notes: